

Section 5.0

Detailed Streetscape Designs





DAWSON TRAIL



A person wearing a blue shirt and dark shorts is riding a bicycle on a paved path. The path is bordered by a concrete curb and a grassy area with several young trees. In the background, a multi-lane road with cars and buildings is visible under a clear sky. The text is overlaid on the left side of the image.

**ARTHUR STREET:
A BOLD ALLÉE OF STREET
TREES, PUNCTUATED BY
ART INSTALLATIONS, WILL
CELEBRATE THUNDER
BAY'S CIVIC CULTURE
AND RECOGNIZE THE
CONTRIBUTIONS OF
COMMUNITY BUILDERS.**

5.1 Arthur Street/the South Core

Theme: A Civic Legacy

Arthur Street leads to the civic core of the City at its southern end and should be a journey that celebrates Thunder Bay's civic culture, and recognizes the contributions of community builders in the founding and development of the City.

Character: A Grand Street

Arthur Street should be characterized as a grand street with a formal civic design.

Design Approach:

An Avenue of Trees

Arthur Street should be characterized by a bold allée of street trees planted along the boulevard. To reflect the formal nature of the street, these trees should be consistently spaced where possible, and located within designated areas in the public and private boulevard, as well as within a centre median.

Recognize the City's Civic Leaders

The design of Arthur Street, particularly in the public realm, should explore opportunities to recognize the City's civic leaders. This could include plaques at historic locations, a "walk-of-Mayors," public art pieces, etc.

Civic leaders to celebrate may include:

- Previous mayors of Thunder Bay
- Influential activists
- Educational leaders
- Historic entrepreneurs

Streets with Prominent Buildings

New buildings located along Arthur Street, particularly towards the South Core, should have a prominent character, reflected by grand entrances, wide boulevards, strong facade articulation, and high-quality materials.

Monumental Art

Arthur Street should be punctuated by art installations at key locations. These installations should be large and bold, and should be made out of strong and permanent materials. Example installations may include statues, fountains, planters, flags, or a combination of all of these. Where installations are large enough, they should incorporate formal seating opportunities.

Gradation of Civic Theme

The civic heart of Arthur Street is the South Core. Therefore, while the civic theme will carry for the entirety of the street, it should increase significantly as you approach the South Core. Smaller interventions, such as flags and formal street trees, are encouraged at the Thunder Bay Expressway, while large monumental art, and prominent style buildings, should be reserved for areas closer to the South Core.

The illustrations that follow demonstrate the detailed streetscape designs for Arthur Street. For descriptions of the recommendations, please refer to Section 4.0: Design Tools.

Arthur Street & May Street - Material Palette

Precast Concrete Unit Pavers



Precast concrete unit pavers for decorative paving strip between sidewalk and curb.

Colour: Charcoal Black

Finish: Premium Finish (i.e. brushed, exposed aggregate, tumbled or standard broom)

Paver Size: 8"x8"

Pattern: Running Bond, parallel to road (to minimize cutting)

Example Product: 8"x8" Unilock Il Campo in Charcoal Black (shown)

Bench



Durable metal bench with end and centre arms. Simple, timeless design. Mid-range price point.

Colour: Black

Finish: Glossy

Size: 72" (6'-0")

Installation Method: Surface Mount

Example Product: landscapeforms Village Green (shown)



Paired garbage & recycling units. Durable, simple design to match bench. Side opening for easy access. Covered top to shield from rain and snow.

Colour: Black

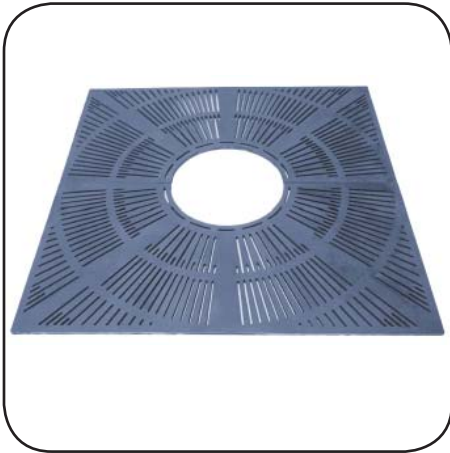
Finish: Glossy

Installation Method: Surface Mount

Options: Concealed latch; plastic liner with drain holes

Example Product: Victor Stanley SDC-36 (shown in grey)

Tree Grate



Cast-iron tree grate at each street tree. Tree grate should not impede future tree growth.

Colour: Natural Cast-iron Patina
Finish: Raw cast-iron
Size: 4'x6' (or to fit site condition)
Pattern: Radial #2

Example Product: Urban Accessories Coho (shown in grey)

Tree Guard



Simple tree guard to protect young trees from damage from snow removal equipment, bicycles, etc. Black colour to match bench and trash receptacles. Tree guard should not impede future tree growth.

Colour: Black
Finish: Glossy
Size:
Installation Method: Bolt-on to tree grate

Example Product: Custom Urban Accessories Unit (shown)

Gateway Signage



For Arthur Street, it is recommended that the gateway signage sit below the future tree canopy. The cut metal signage should be mounted on a granite base for longevity and durability.

Gateway signage should be used sparingly and only at key sites as identified in this document. Such locations include the entrance to the City from the Expressway as well as the entrance to the South Core. All gateway signage, at the expressway, will need to be approved by relevant Provincial Regulating bodies.

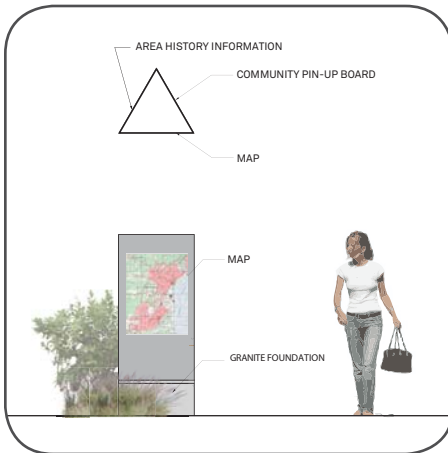
Banners



Banners are recommended, in key focus areas, along the Image Routes. Generally, the banner programs should be maintained by the local BIA groups and should be coordinated and approved by the City.

There are two approaches to banner installations. One such approach is for vehicles and the other for pedestrians. Banners should be focused in key areas throughout the Image Routes. Banners for vehicles should be installed at gateway locations, where significant traffic exists, such as Thunder Bay Expressway. Banners for pedestrians should be installed at areas where events and festivals are held. Pole and lighting fixture selection should consider the accommodation of future banners, and should allow for integrated hardware to support the banners.

Wayfinding



Wayfinding signage is important in order to identify the location of nearby landmarks, or other amenities. Such signage should also speak to the area history and provide information related to community events.

Generally, wayfinding markers should be reserved for areas with high pedestrian and cyclist traffic, and should be placed at key locations along the length of Arthur, including Vickers Park.

The markers are recommended to be three-sided, and could be comprised of cast steel poles with steel panels. Wayfinding information could include an area map with key destinations, community pin-up board and information about the image route vision. The markers are recommended to be mounted on top of a granite foundation to ensure longevity and ease of maintenance as well as to ensure consistency with the design of gateway markers.

Pedestrian Lighting



A consistent approach for street and pedestrian lighting is recommended for all of the image routes. Using a similar fixture style throughout will allow for ease of maintenance and will maximize the City's value for dollar. In special character areas, such as the South Core and Vickers Park, pedestrian lighting is recommended to provide for a safe and inviting pedestrian environment.



Arthur Street: Before

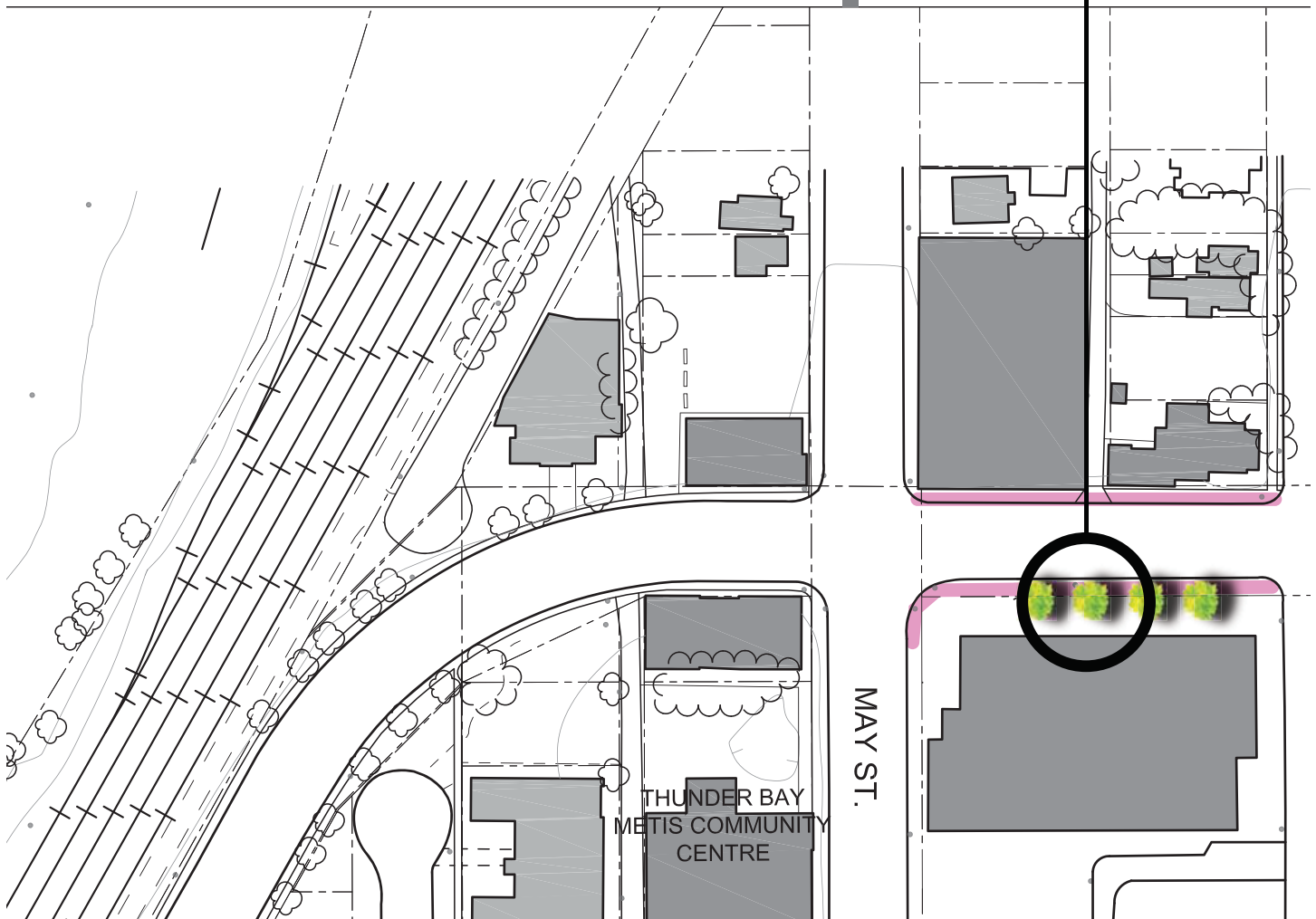


Arthur Street: After

MAY STREET

Recommended Improvements

- Street Trees - Page 19
- Private Trees - Page 22
- Boulevard Improvements - Page 25



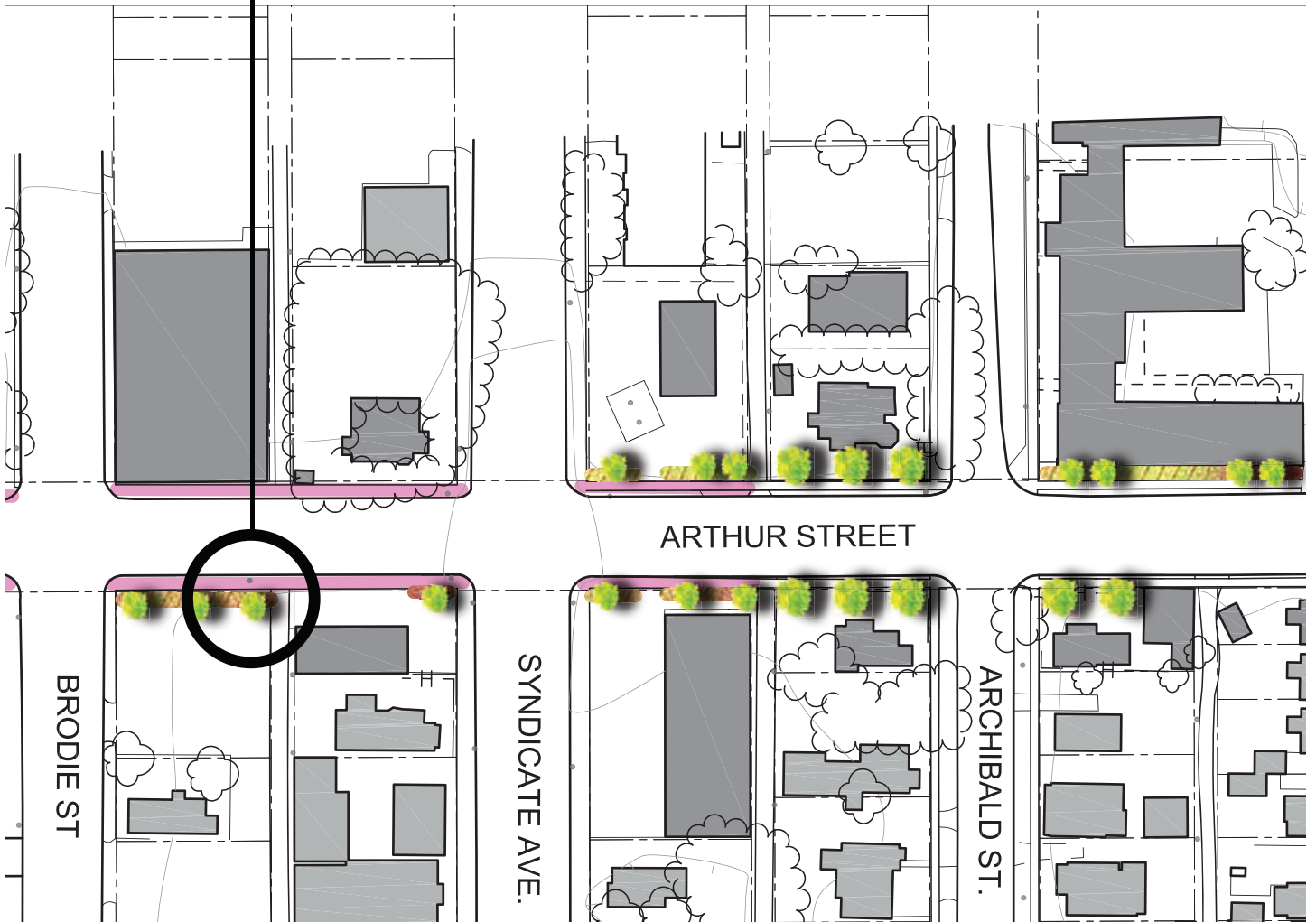
Arthur Street

MAY ST.



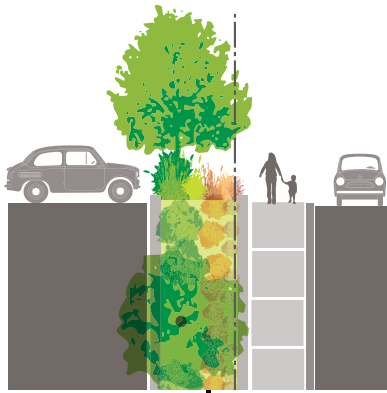
Recommended Improvements

- Private Trees - Page 22
- Boulevard Widening - Page 24
- Screen Planting - Page 27



Arthur Street





Recommended Improvements

- Private Trees - Page 22
- Screen Planting - Page 27

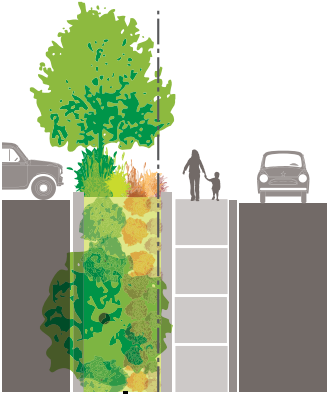


Recommended Improvements

- Private Trees - Page 44

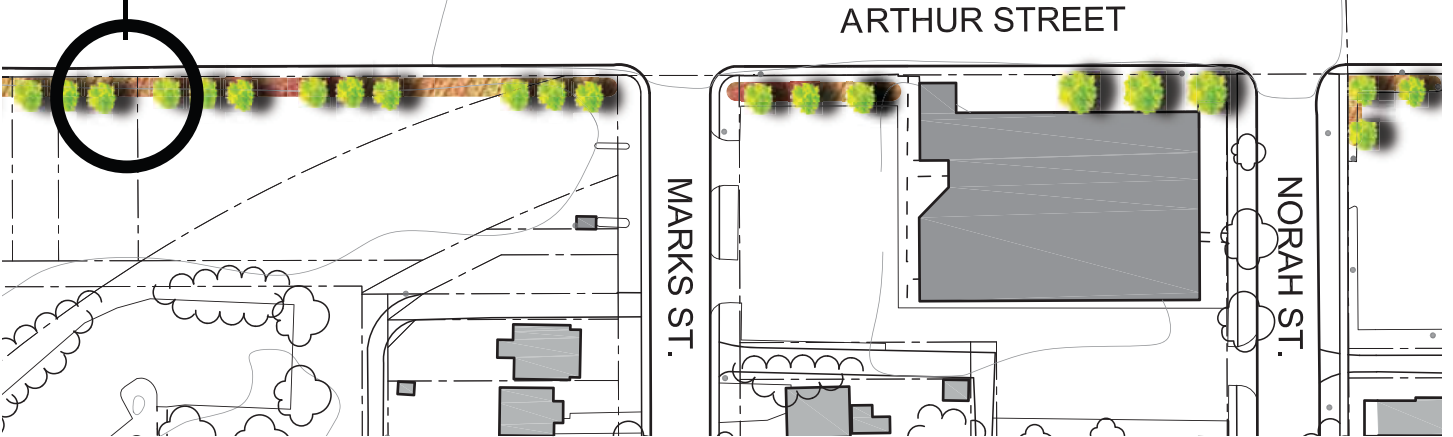
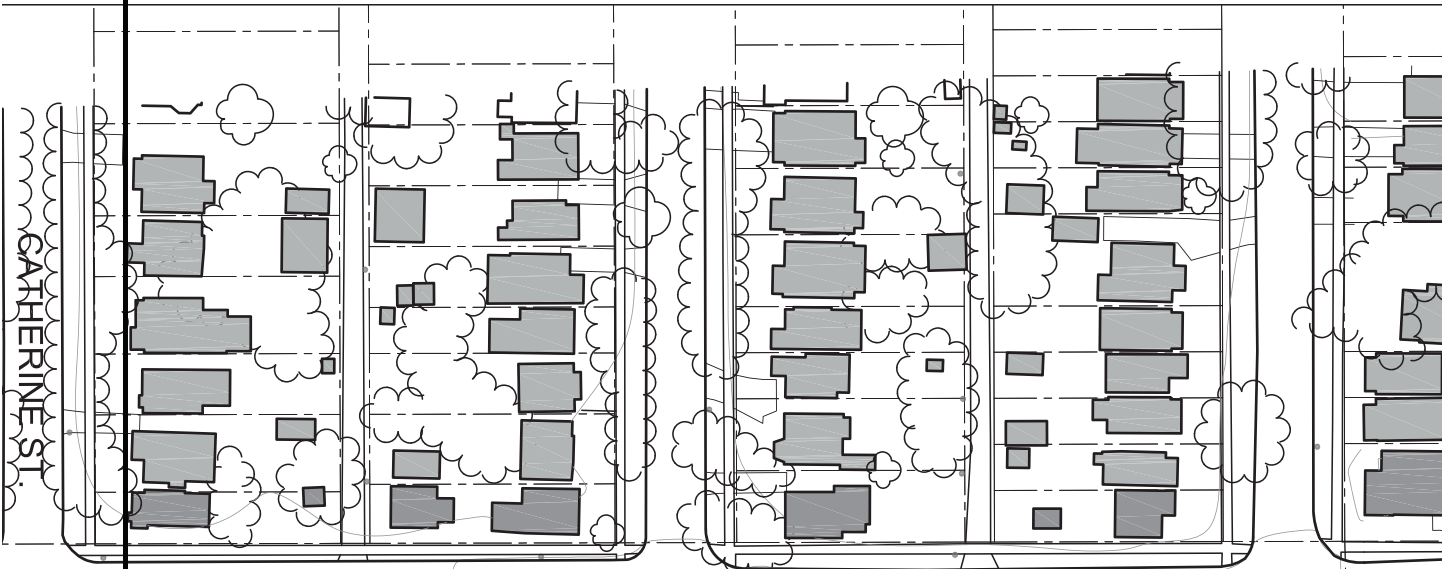


Arthur Street



Recommended Improvements

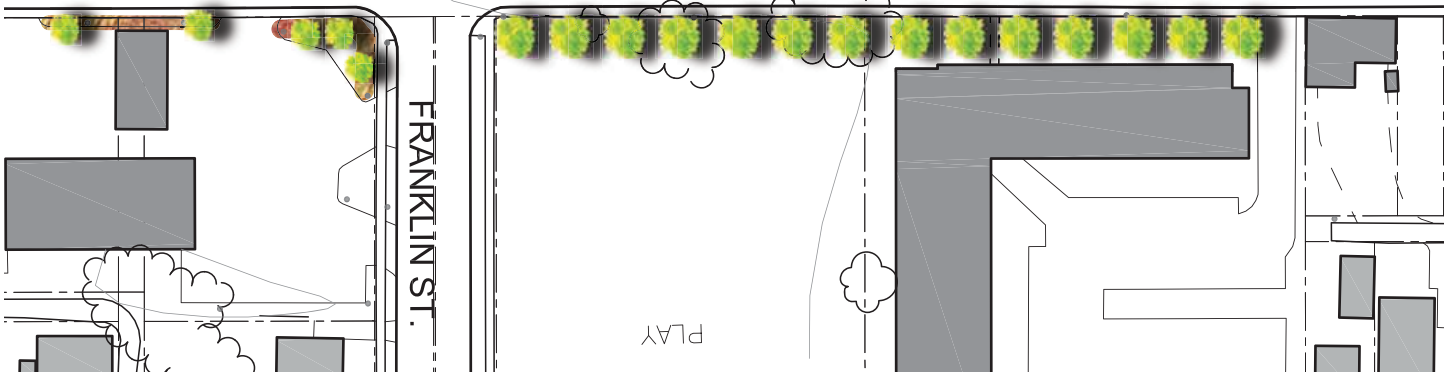
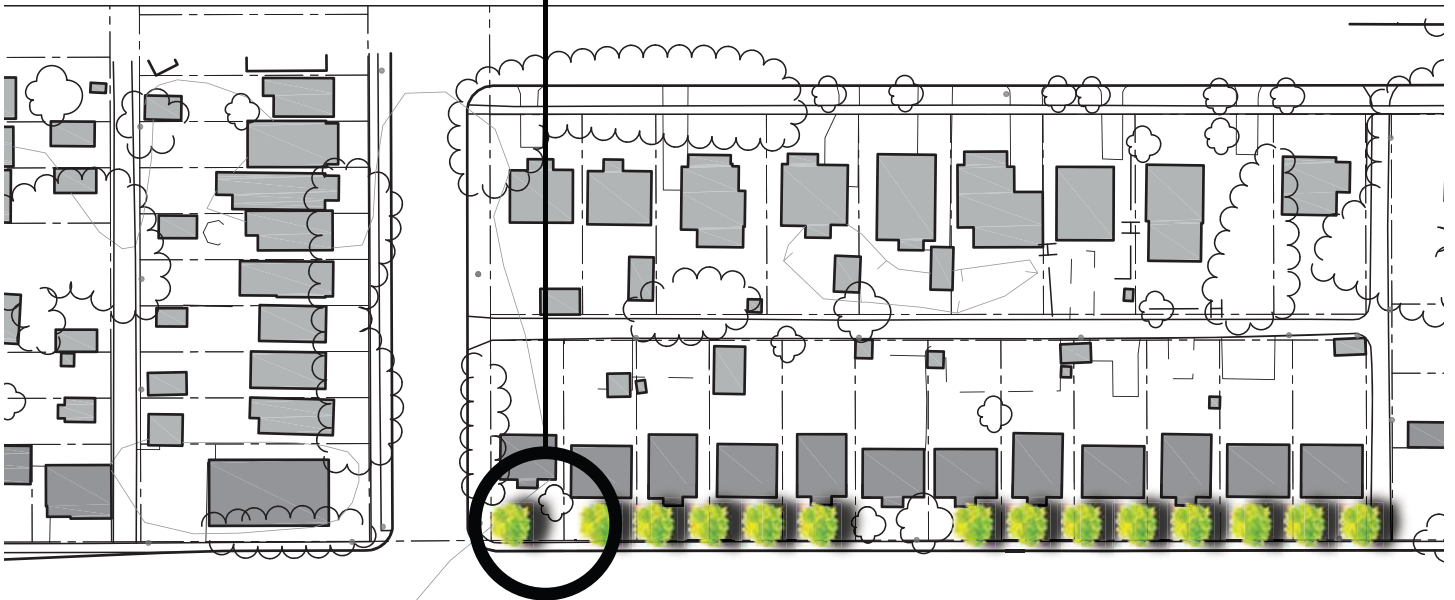
- Private Trees - Page 22
- Screen Planting - Page 27





Recommended Improvements

- Private Trees - Page 22

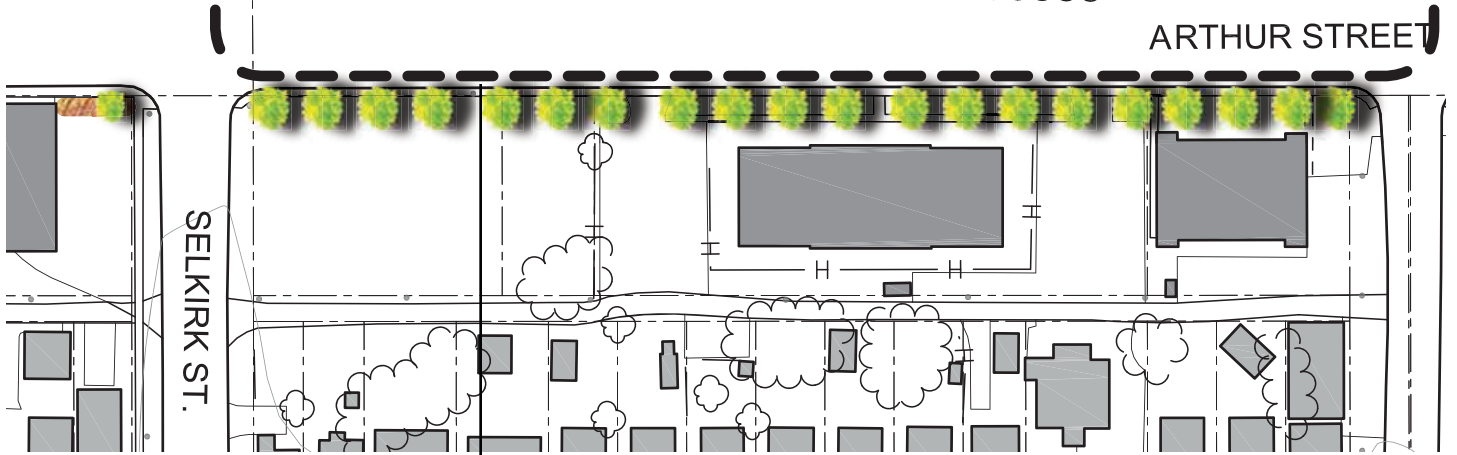
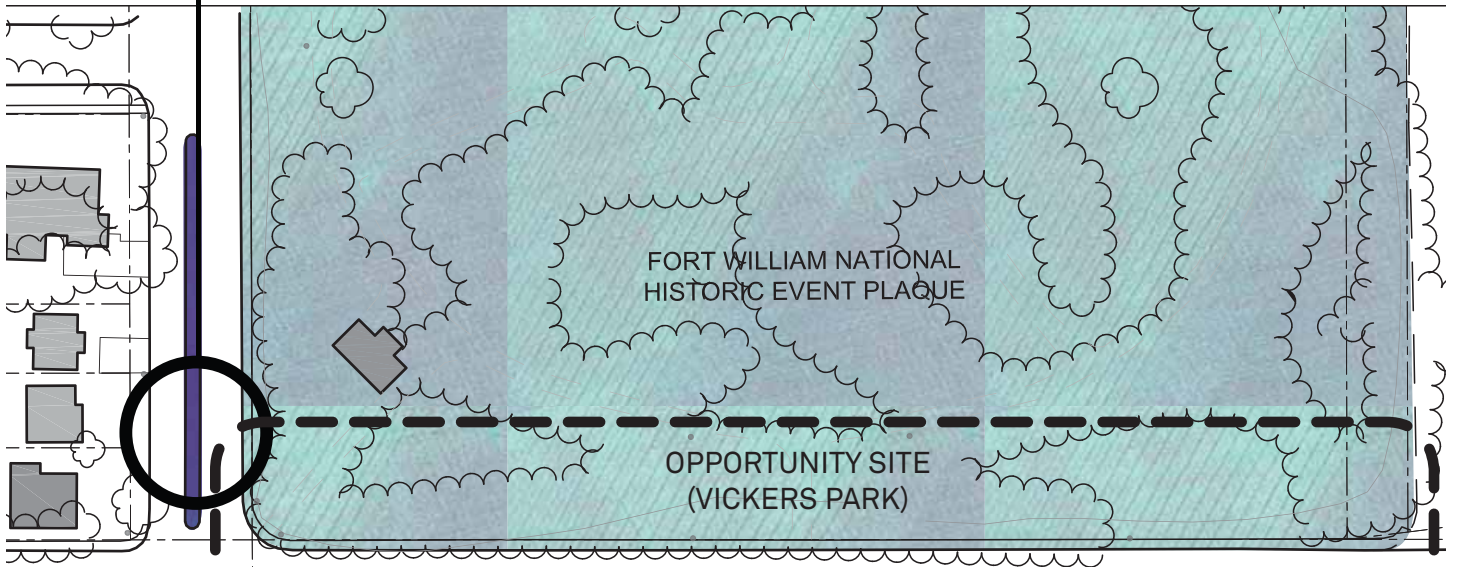


Arthur Street



Recommended Improvements

- Green Median - Page 21



Vicker's Park Demonstration Site

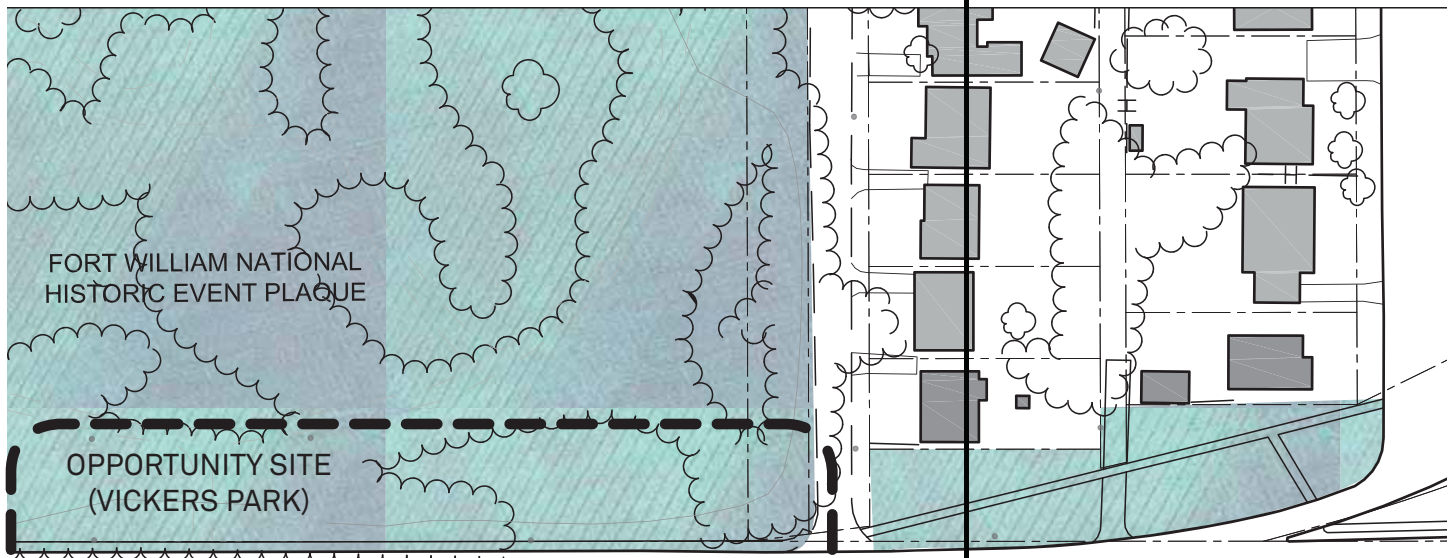
- See Page 35





Recommended Improvements

- Private Trees - Page 22



ARTHUR STREET



Arthur Street

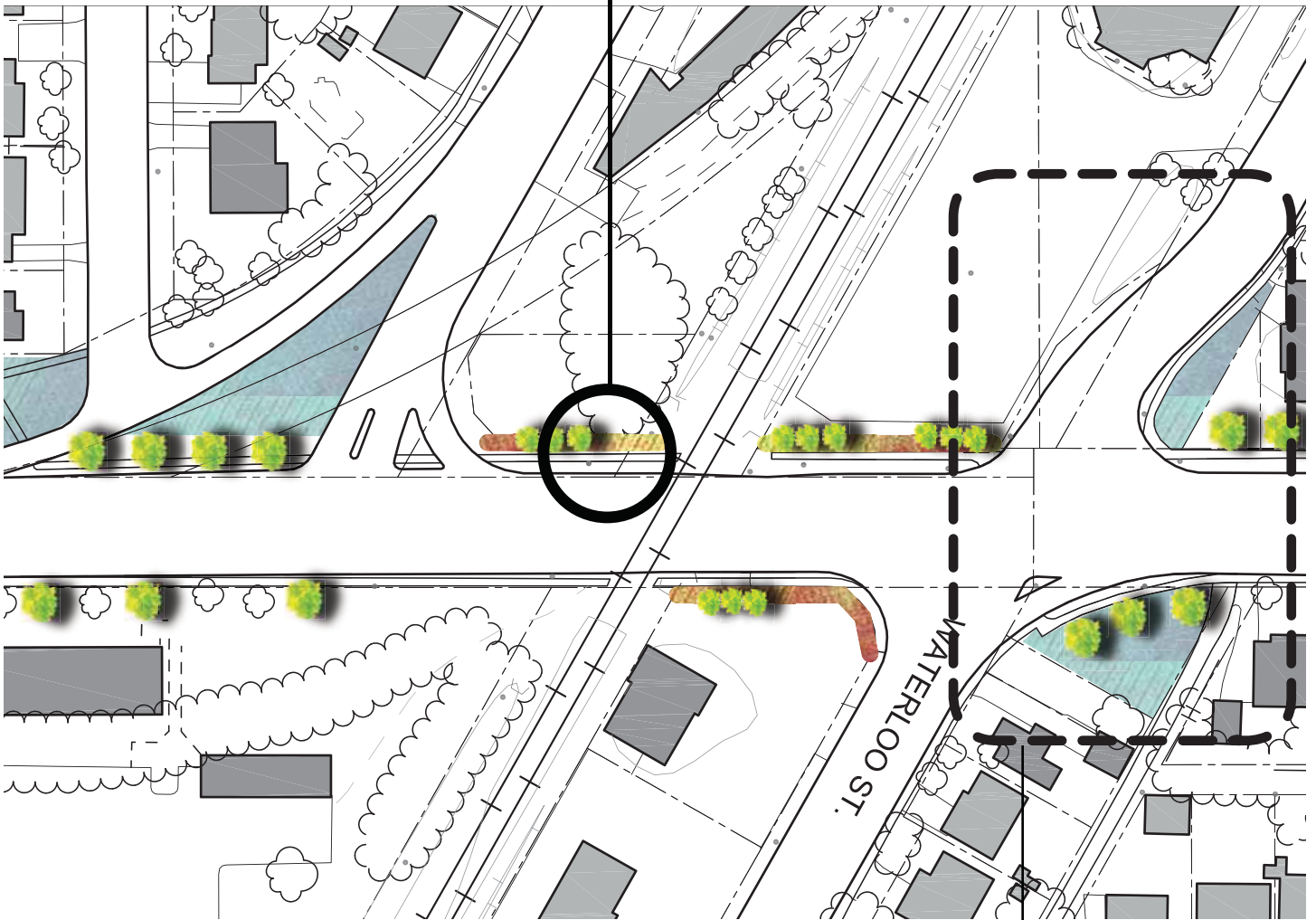
Vicker's Park Demonstration Site

- See Page 35



Recommended Improvements

- Private Trees - Page 22
- Screen Planting - Page 27



Opportunity Site

- See Page 33

Arthur Street



WATERLOO STREET



Recommended Improvements

- Private Trees - Page 22

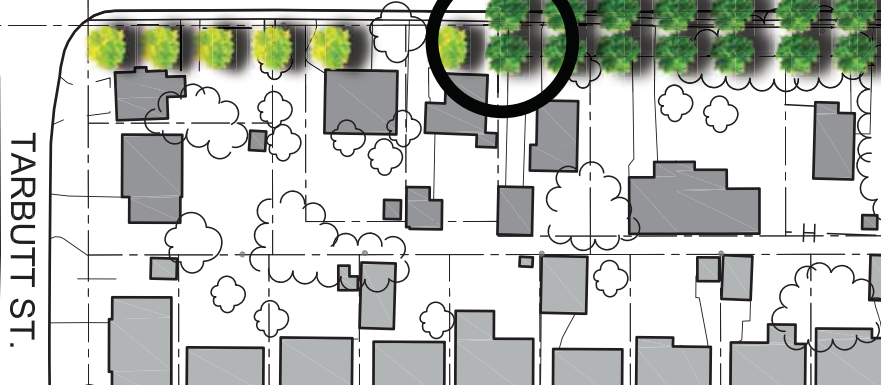


Recommended Improvements

- Street Trees - Page 19



ARTHUR STREET



Arthur Street



Recommended Improvements

- Private Trees - Page 22



Arthur Street



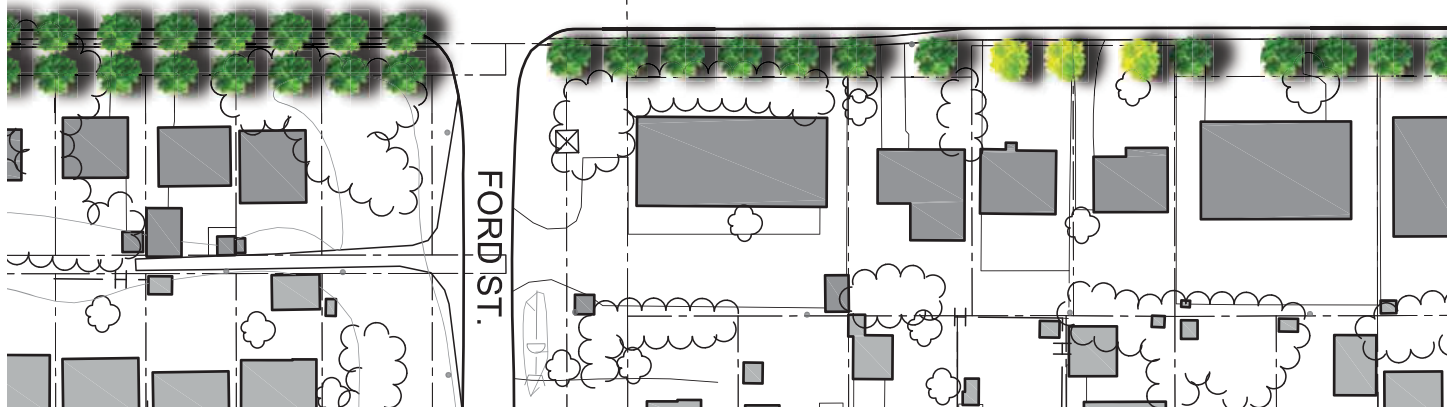


Recommended Improvements

- Street Trees - Page 19
- Private Trees - Page 22



ARTHUR STREET

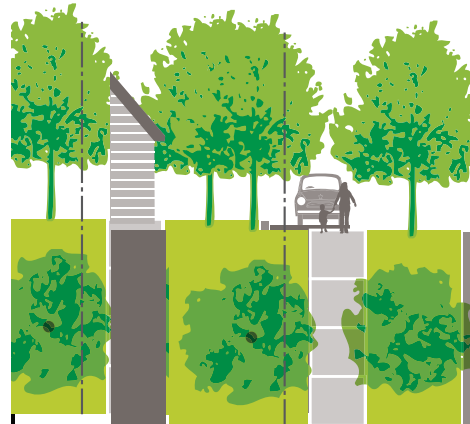


Arthur Street



Recommended Improvements

- Street Trees - Page 19

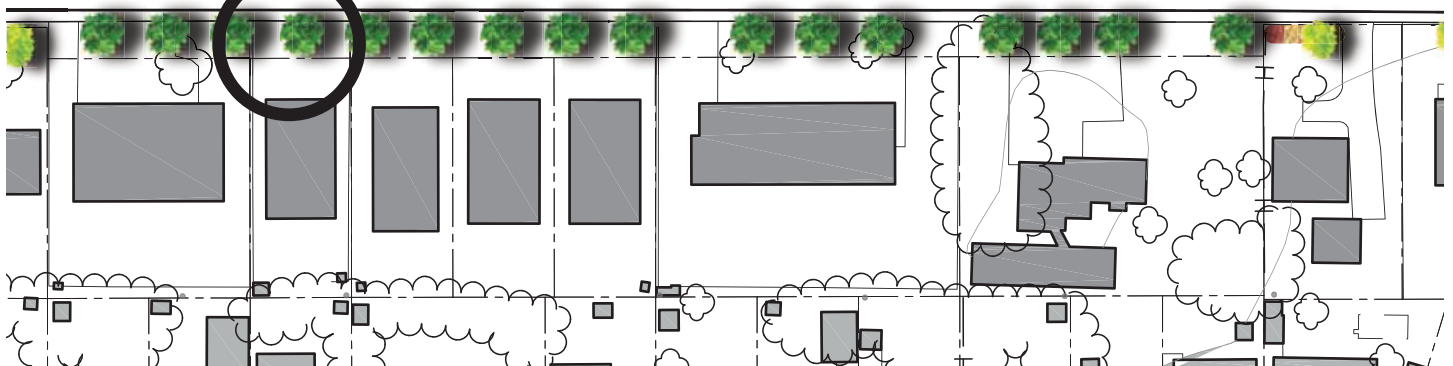


Recommended Improvements

- Street Trees - Page 19
- Private Trees - Page 22



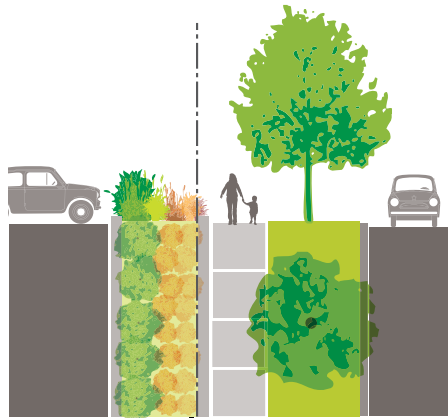
ARTHUR STREET



Arthur Street

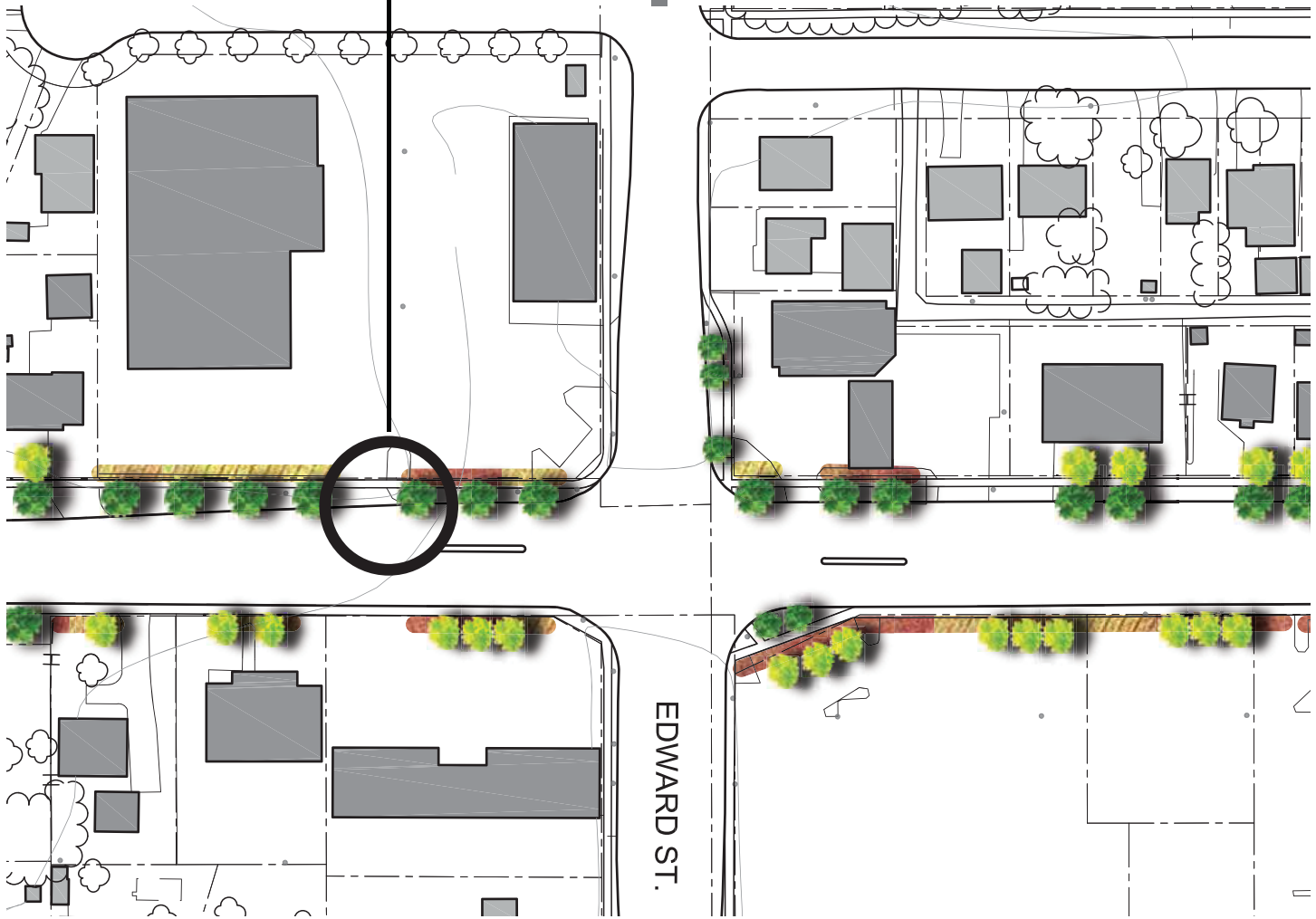


EDWARD STREET



Recommended Improvements

- Street Trees - Page 19
- Screen Planting - Page 27

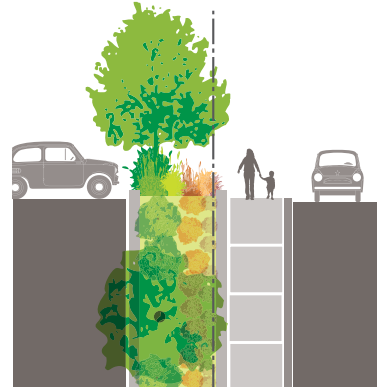


Arthur Street



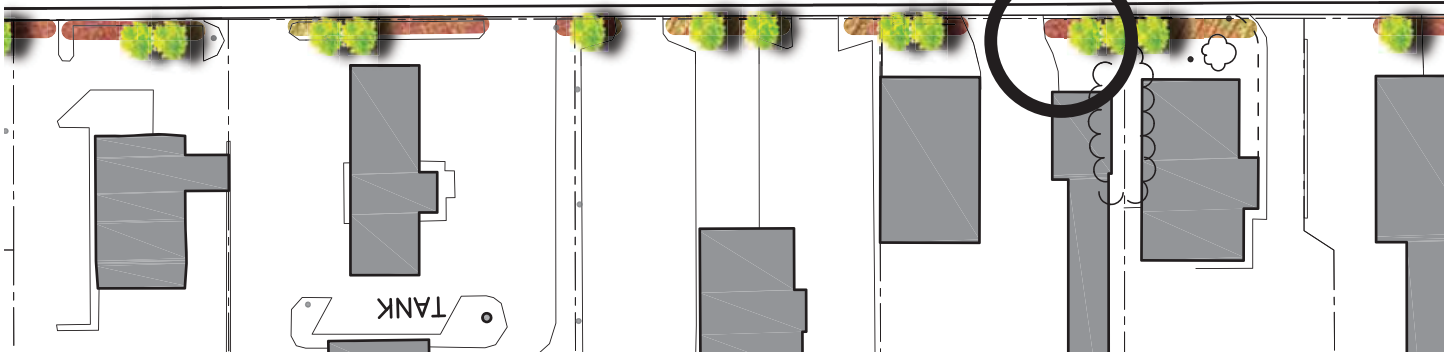
Recommended Improvements

- Street Trees - Page 19
- Private Trees - Page 22



Recommended Improvements

- Private Trees - Page 22
- Screen Planting - Page 27



Arthur Street



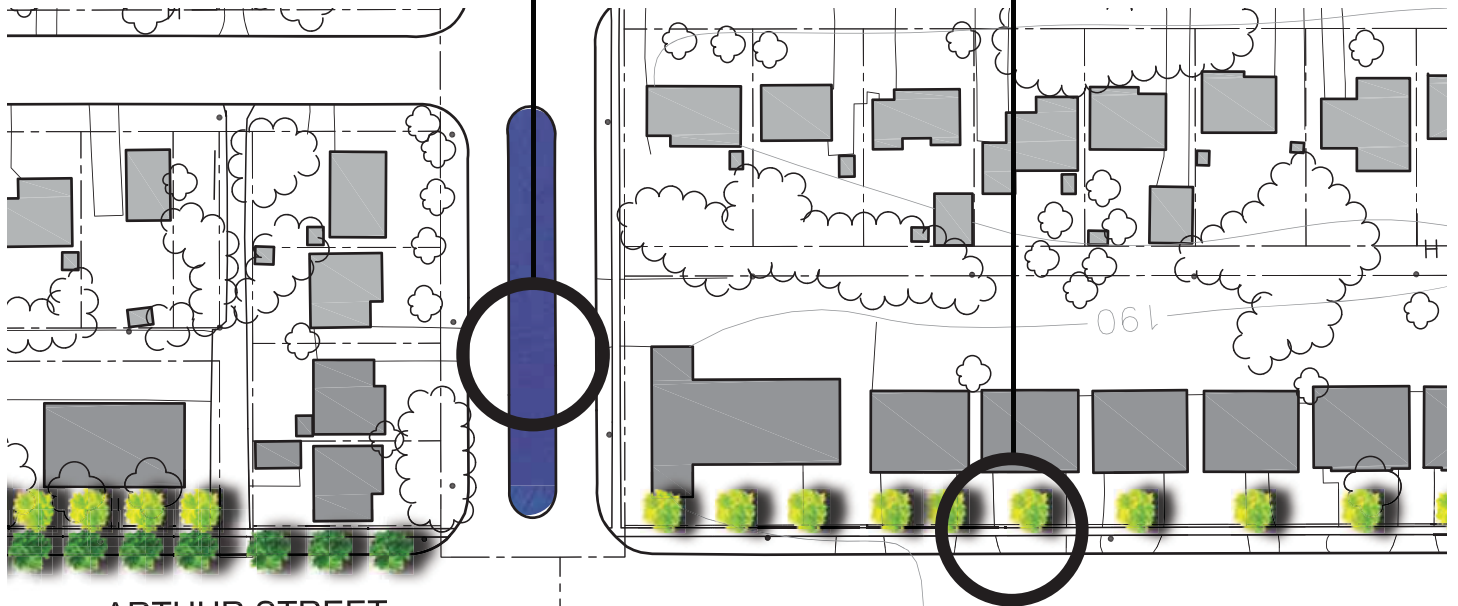
Recommended Improvements

- Green Median - Page 21

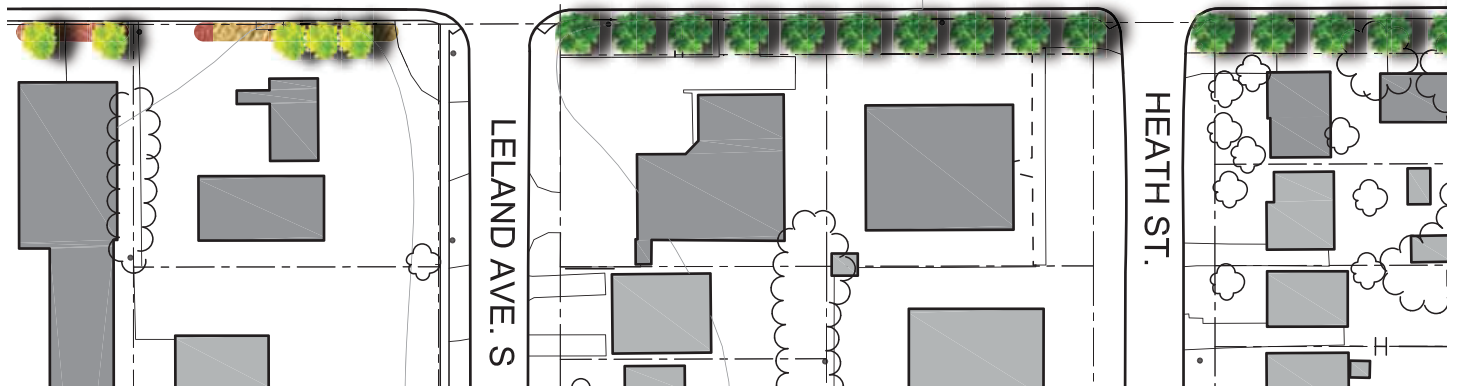


Recommended Improvements

- Private Trees - Page 22



ARTHUR STREET



Arthur Street

LELAND AVE. S

HEATH ST.



Recommended Improvements

- Private Trees - Page 22



Recommended Improvements

- Street Trees - Page 19



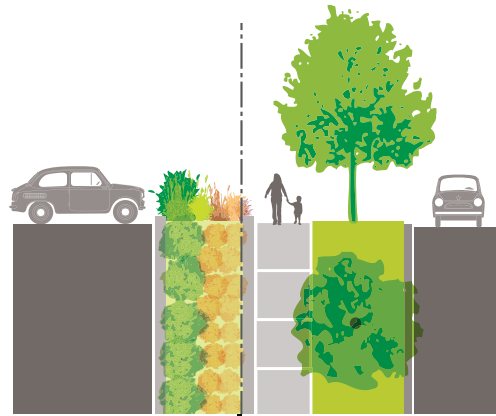
ARTHUR STREET



Arthur Street

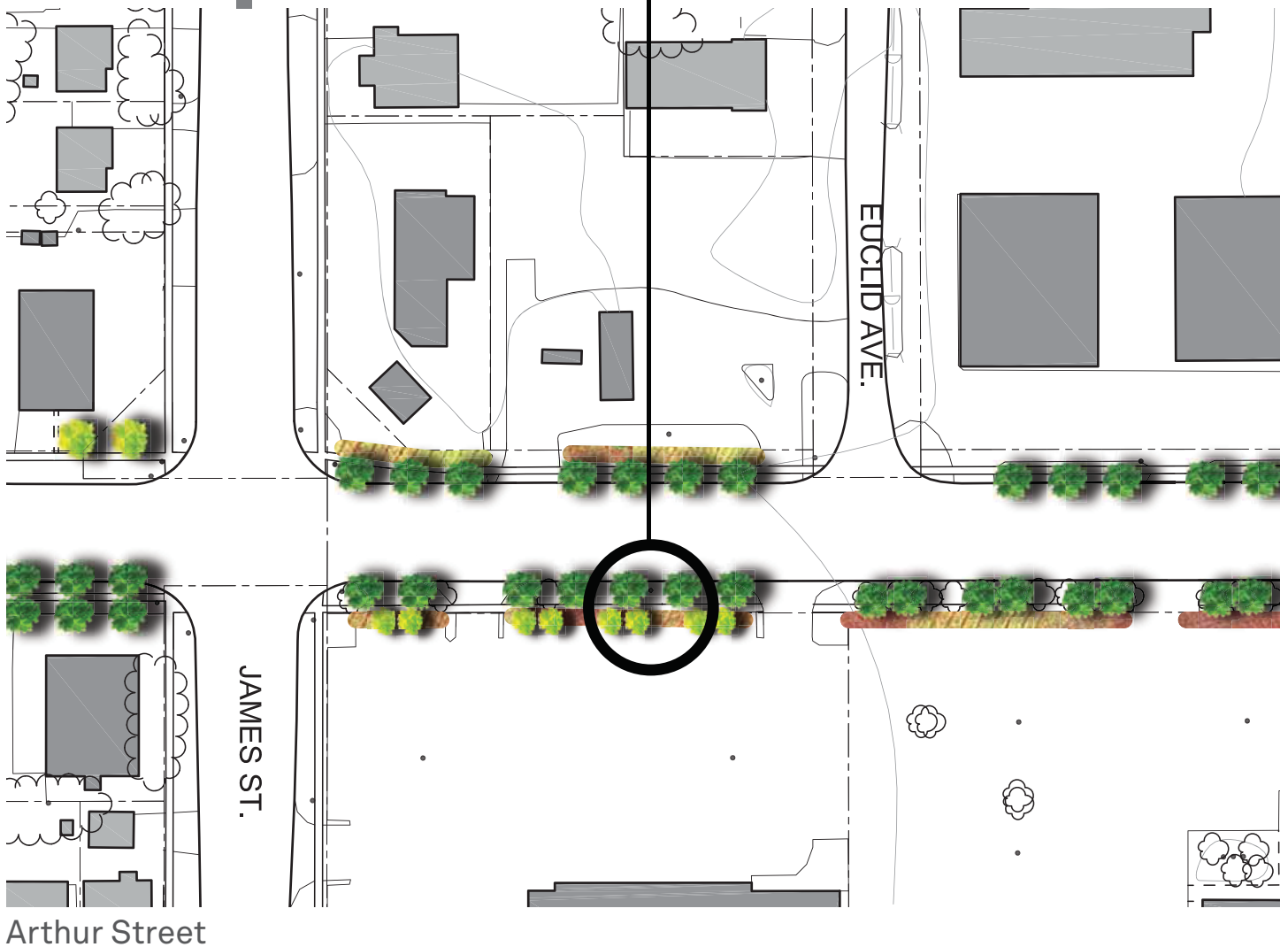


JAMES STREET



Recommended Improvements

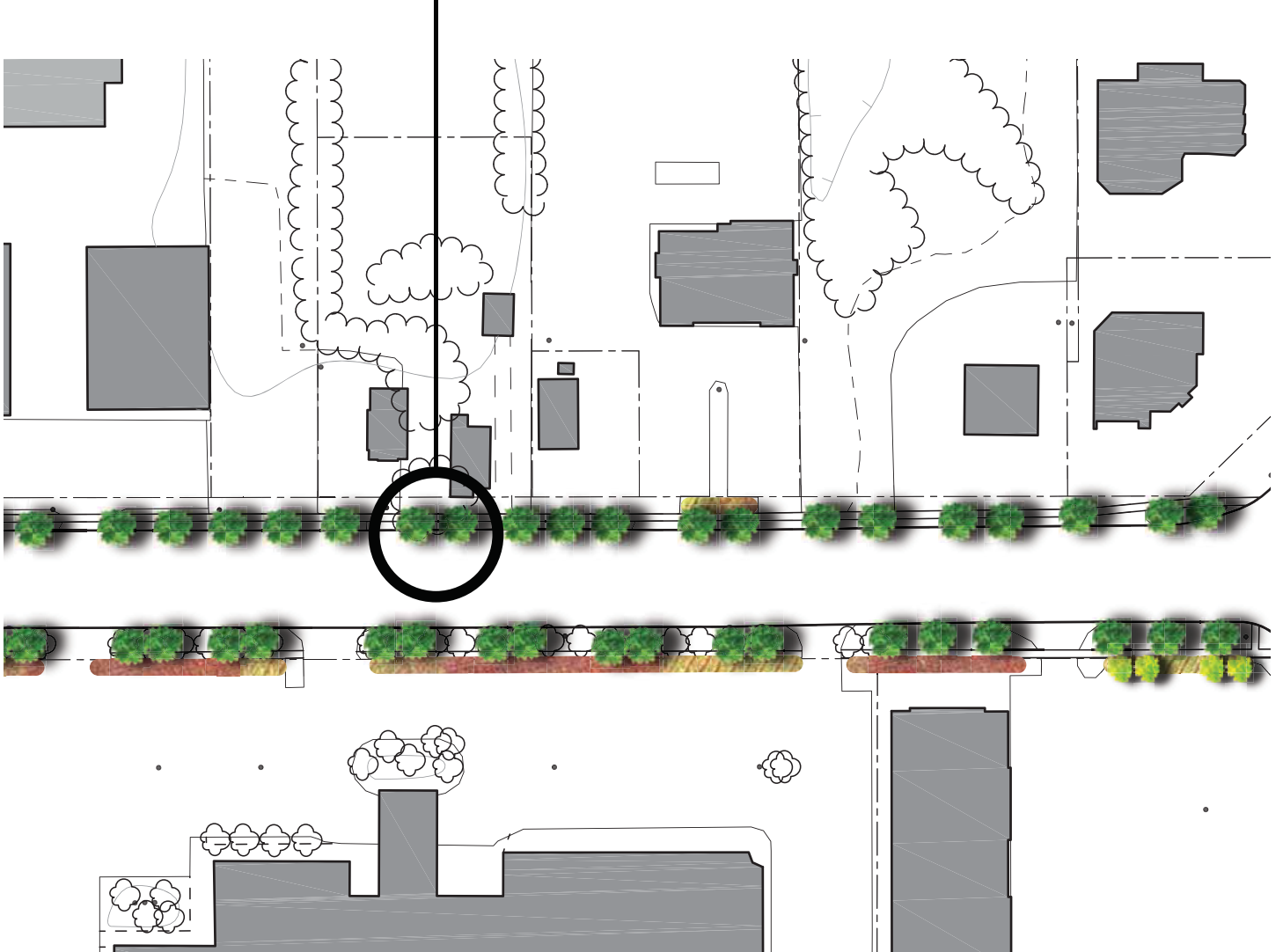
- Street Trees - Page 19
- Screen Planting - Page 27





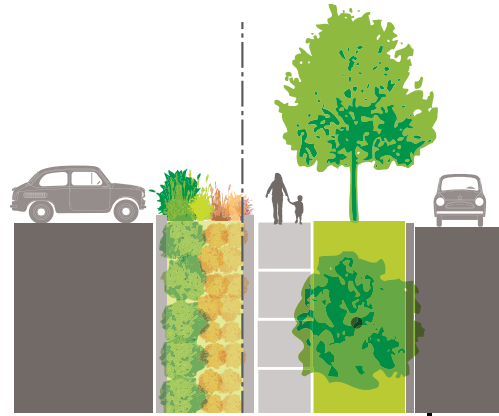
Recommended Improvements

- Street Trees - Page 19
- Screen Planting - Page 27



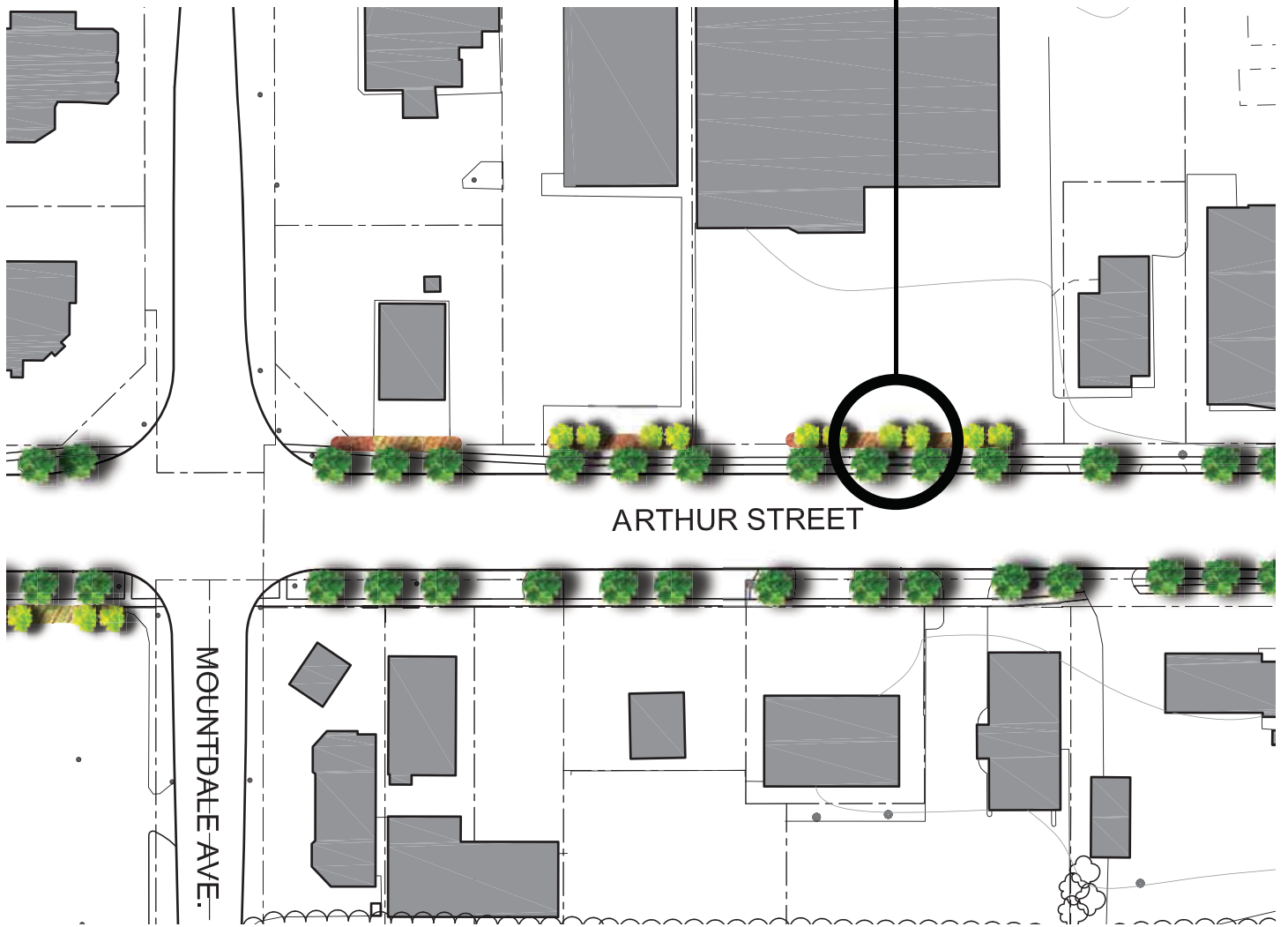
Arthur Street



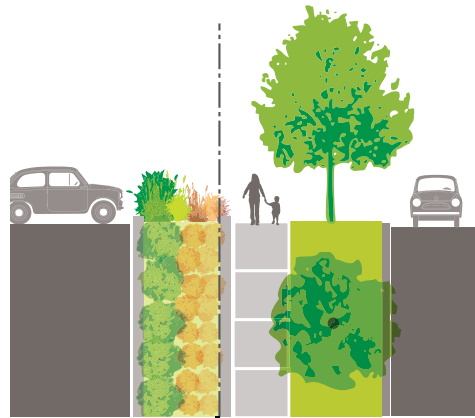


Recommended Improvements

- Street Trees - Page 19
- Screen Planting - Page 27



Arthur Street



Recommended Improvements

- Street Trees - Page 19
- Screen Planting - Page 27



Arthur Street

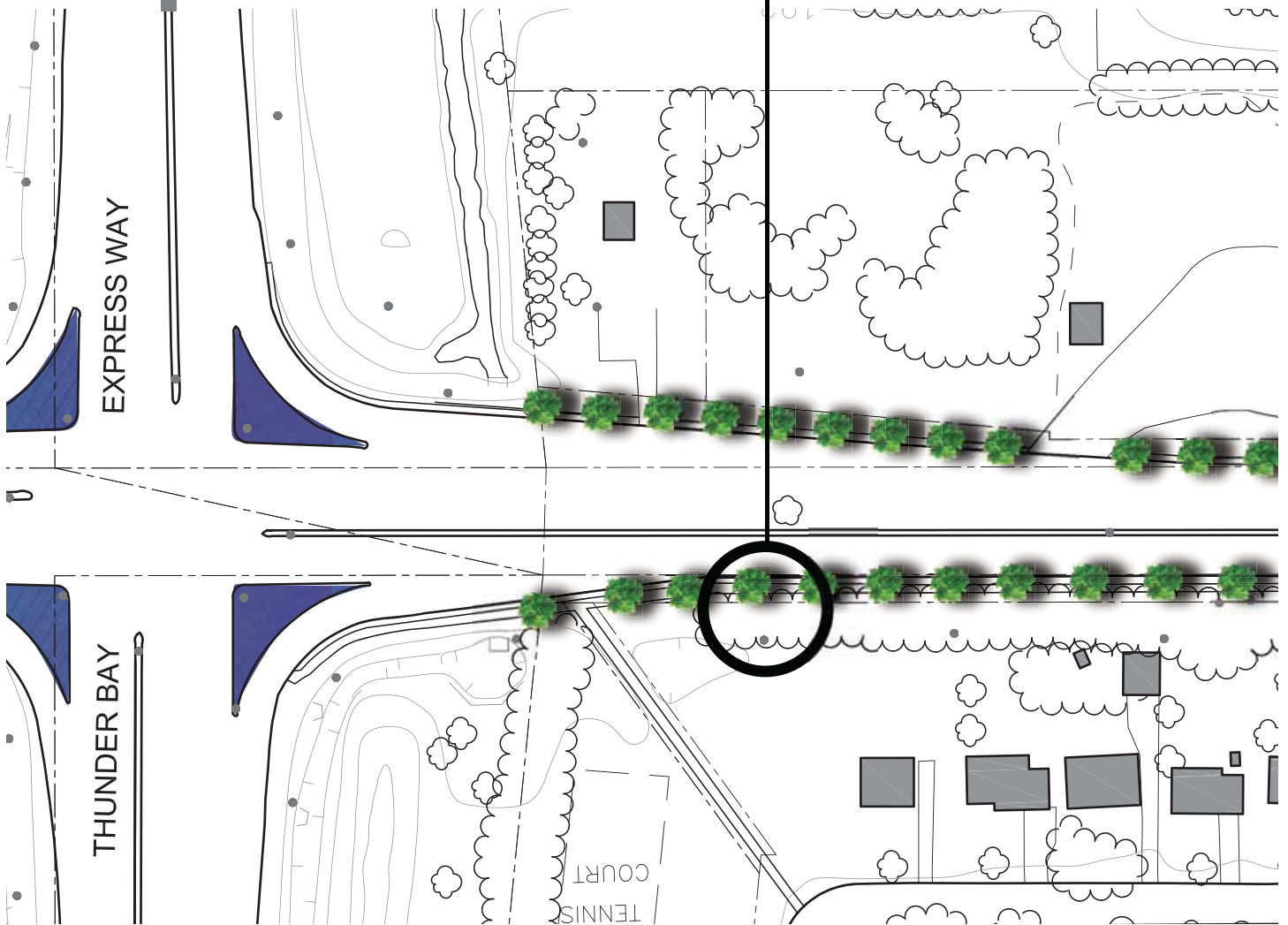


THUNDER BAY EXPRESSWAY



Recommended Improvements

- Street Trees - Page 19

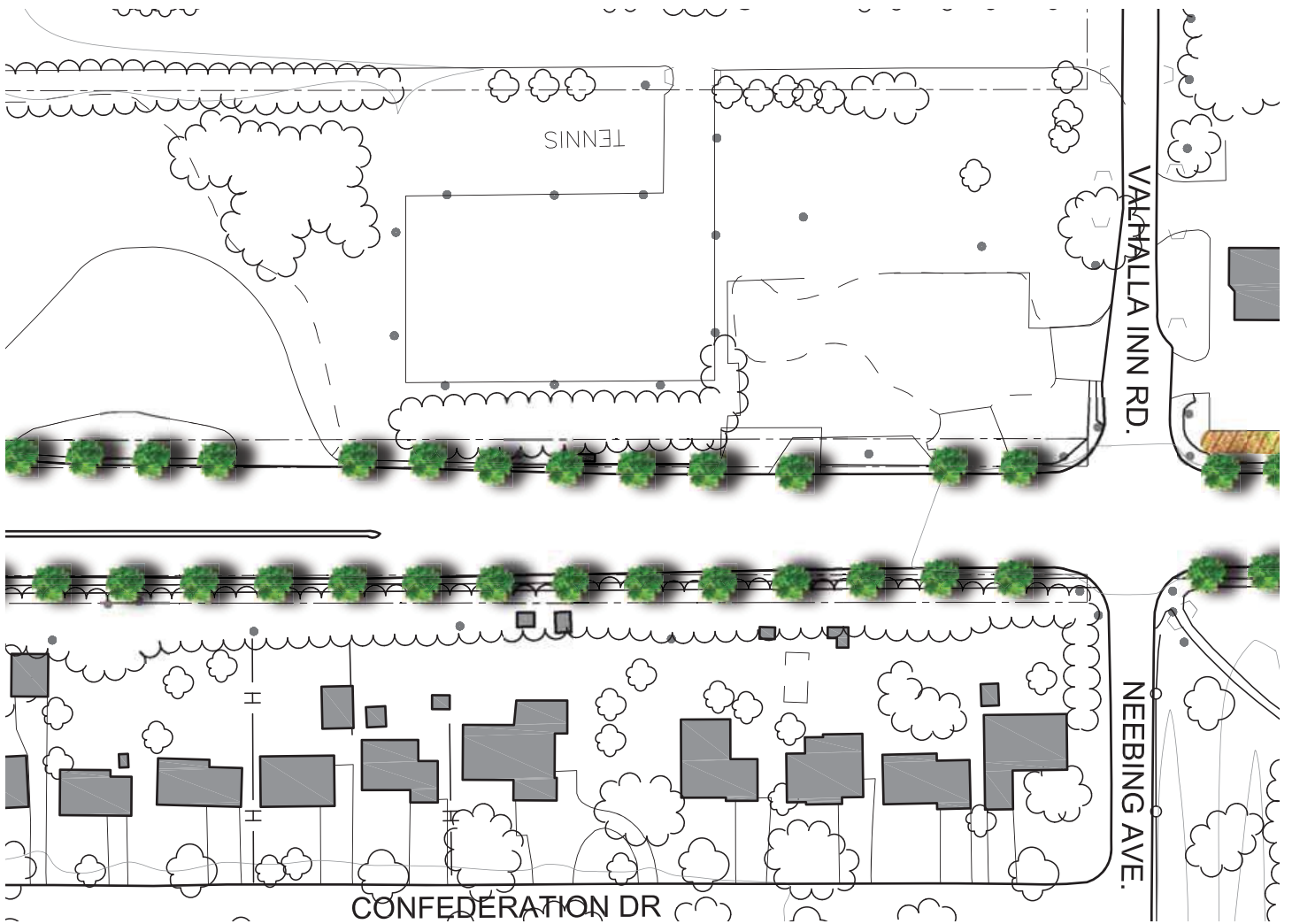


EXPRESS WAY

THUNDER BAY

Arthur Street

TENNIS COURT



Arthur Street





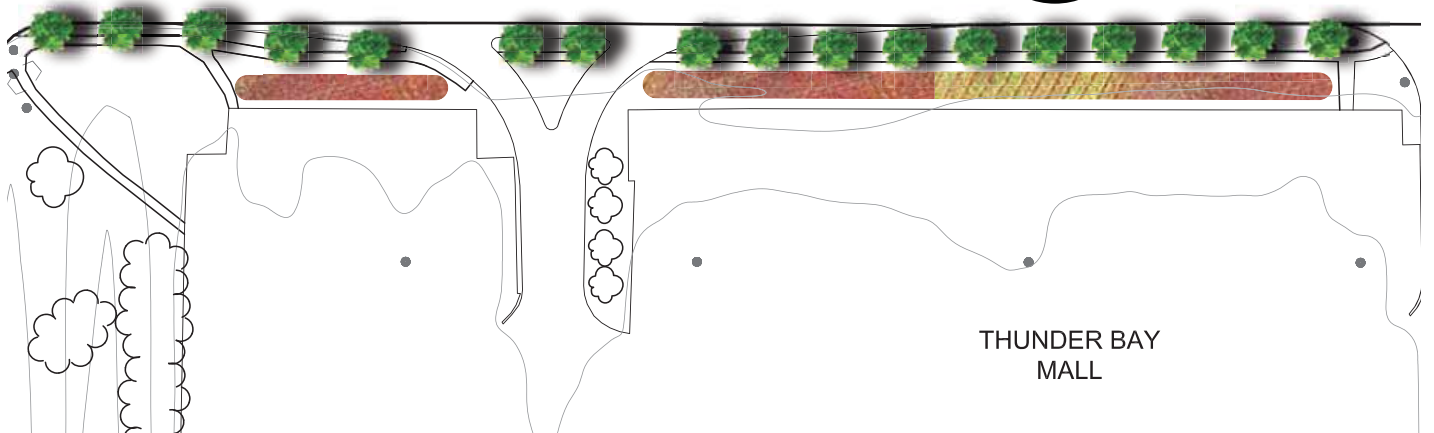
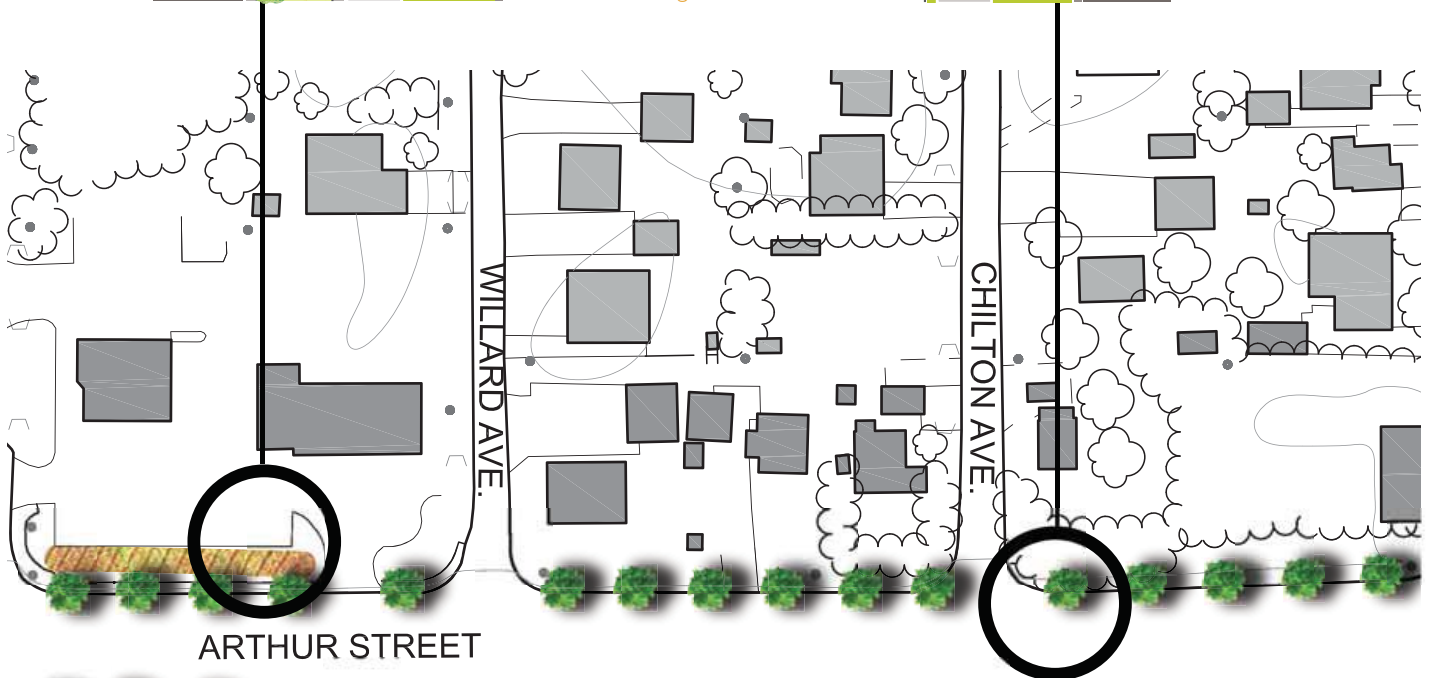
Recommended Improvements

- Street Trees - Page 19
- Screen Planting - Page 27



Recommended Improvements

- Street Trees - Page 19



Arthur Street



